

EXPERTISE: EMBEDDING OF MACRO REGIONAL STRATEGIES: REFLEXIONS BASED ON THE EXAMPLE OF INTERREG CBC PROGRAMMES

PRESENTATION

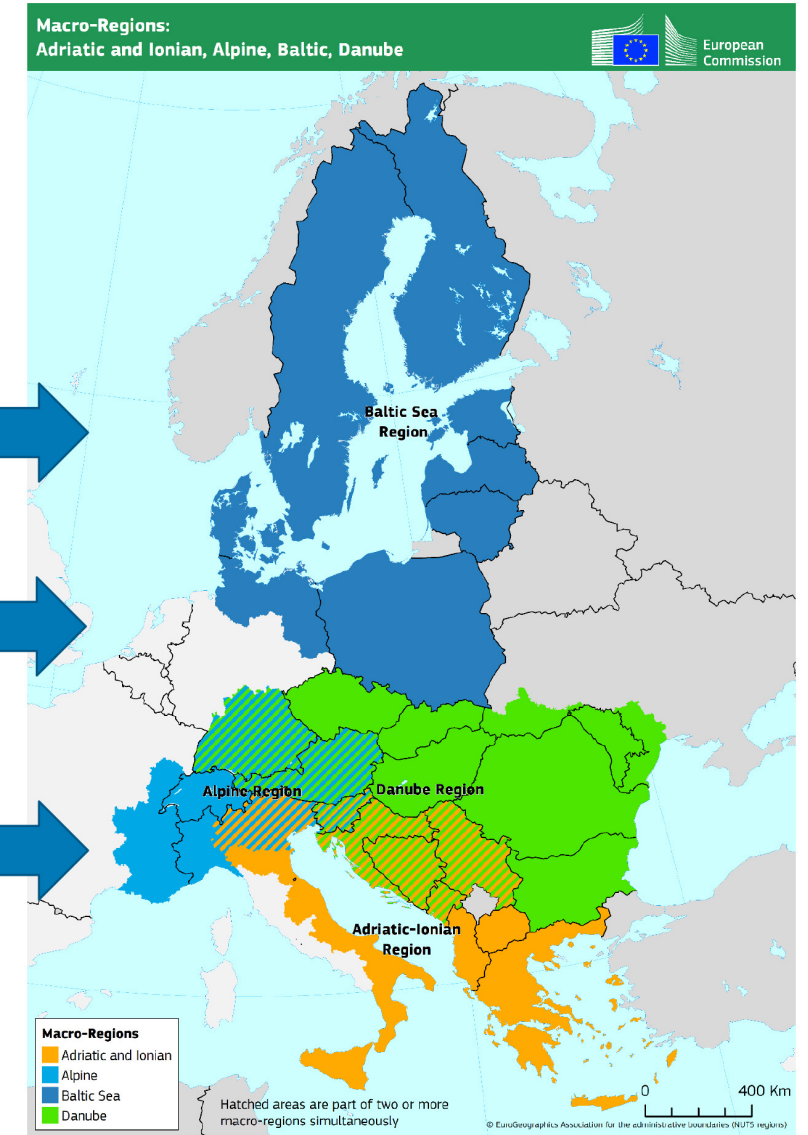
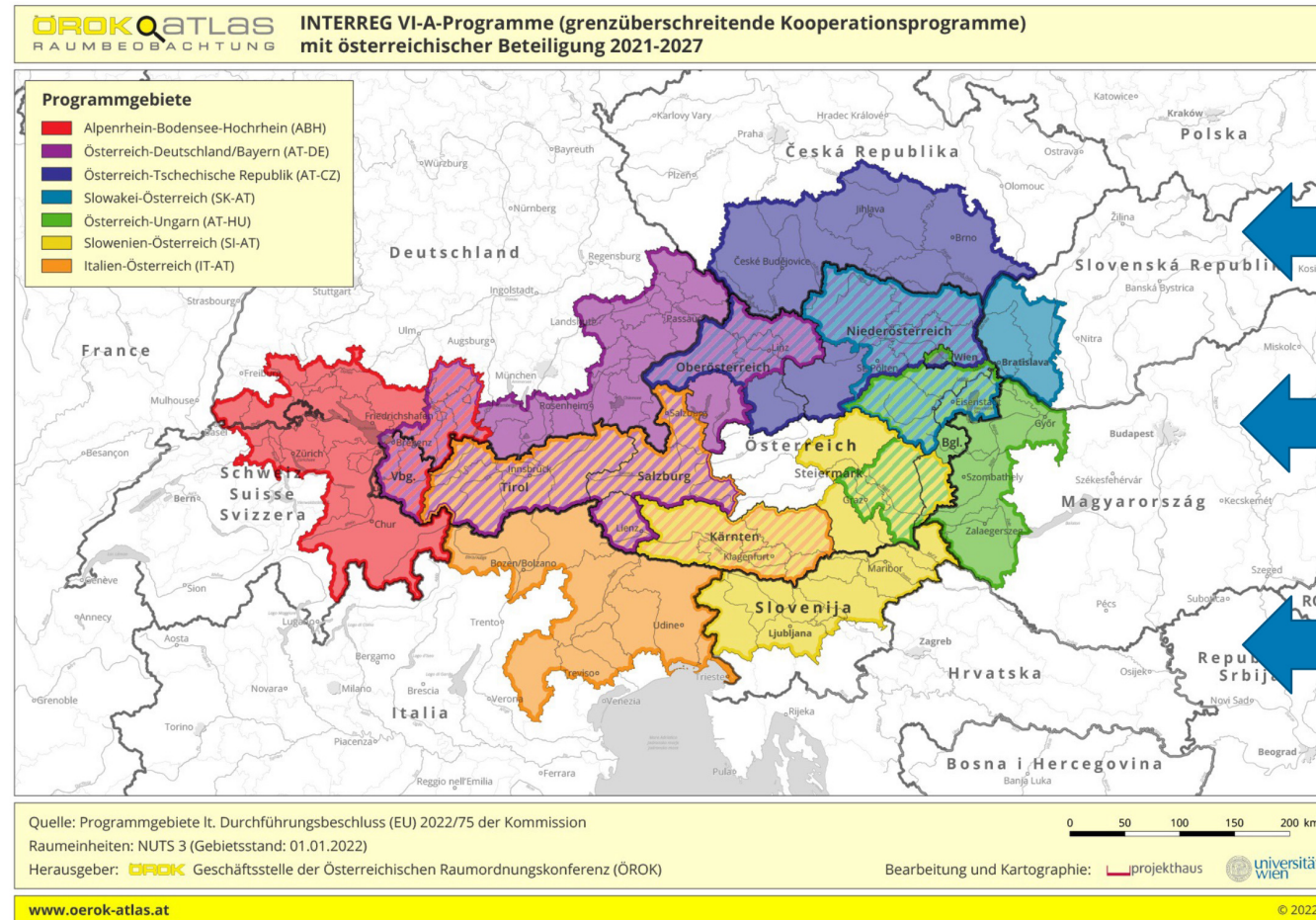
June 2023

EMBEDDING OF MACRO REGIONAL STRATEGIES: REFLEXIONS BASED ON THE EXAMPLE OF INTERREG CBC PROGRAMMES

Objectives

- **Preparing recommendations for a more active embedding of macro-regional strategies in Interreg CBC programmes involving Austria**
- **Identifying possible opportunities for transferability to other programmes**

Interreg CBC programmes (AT) and EU macro-regional strategies



Definition of „Embedding“ used in the project

*The „**Embedding of macro-regional strategies**“ (embedding) in other programmes means paying attention to priorities/activities of the MRS and enabling approaches for projects, activities or other implementation processes in these programmes.*

*This enables the **use of these programmes** for the implementation of the macro-regional strategies.*

*By “**embedding**”, the integration of measures and projects foreseen or planned in the framework of the macro-regional strategies into national, interregional or cross-border programmes can be realised.*

(Wording based on Report on the implementation of EU macro-regional strategies 2022 and Austrian National Coordination for EUSALP).

Why „Embedding“?

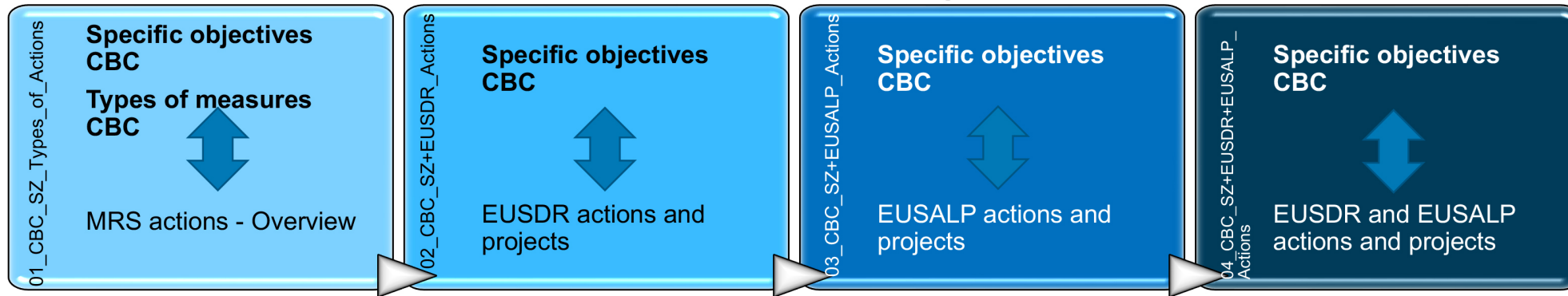
- **Why:** To exploit synergies and better integrate EU policies and funding.
- **Understanding:** Embedding goes beyond "purely financial" activities and also includes governance, coordination or communication measures.
- **Hypothesis:** Cross-border CBC programmes have the potential to support MRS and could better exploit synergies.

Key steps of the project („brief-expertise on embedding“)

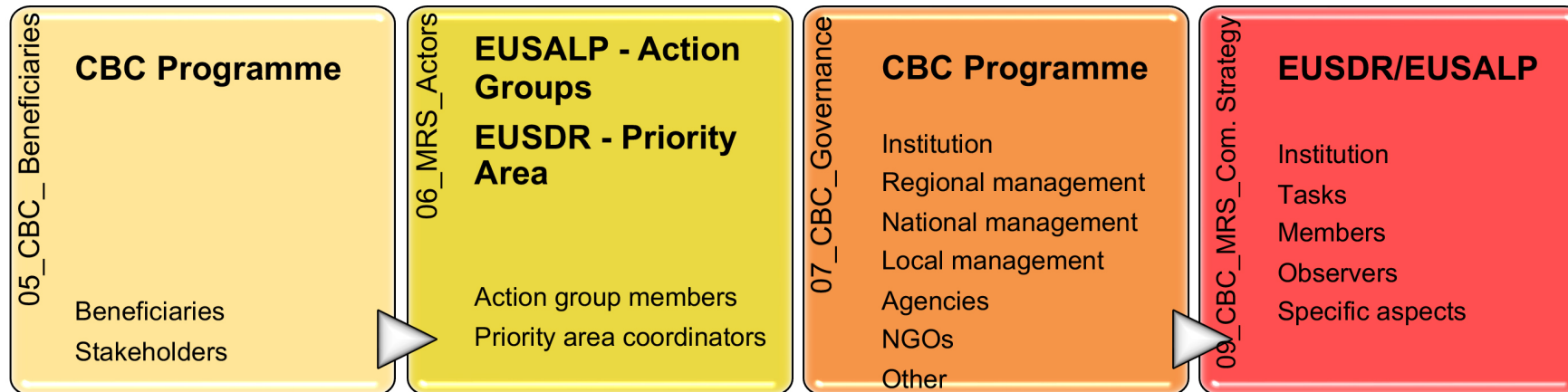
- Comparison of **coherence of CBC programmes and MRS** along the intervention logic (matchmaking tool).
- Description of **possible measures to enable the embedding** of MRS in CBC programmes along the programme cycle.
- Presentation of selected **examples**
- **Recommendations for active embedding** of MRS in CBC programmes

Description of the matchmaking tools

Thematic matchmaking



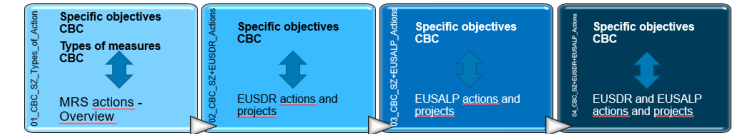
Matchmaking of actors



Communication matchmaking



Analysis on thematic coherence of CBC programmes and macro-regional strategies along the intervention logic

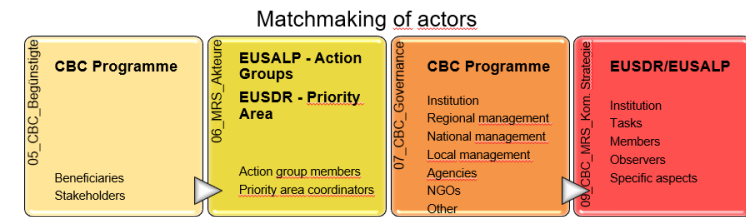


Thematic matchmaking

Suggestion of possible themes for cooperation between CBC programmes and MRS:

- CPR SO1(i): developing and enhancing research and innovation capacities and the uptake of advanced technologies
- CPR SO2 (iv): promoting climate change adaptation and disaster risk prevention and resilience, taking into account eco-system based approaches,
- CPR SO2 (v): promoting access to water and sustainable water management
- CPR SO2 (vii): enhancing protection and preservation of nature, biodiversity and green infrastructure, including in urban areas, and reducing all forms of pollution

Matchmaking of actors



CBC Programmes

MRS

Management and coordination

Governance system in Austria at federal state level

Coordination at national level

Stakeholders

Stakeholders at national, regional, local level

Stakeholders at national, regional, local level

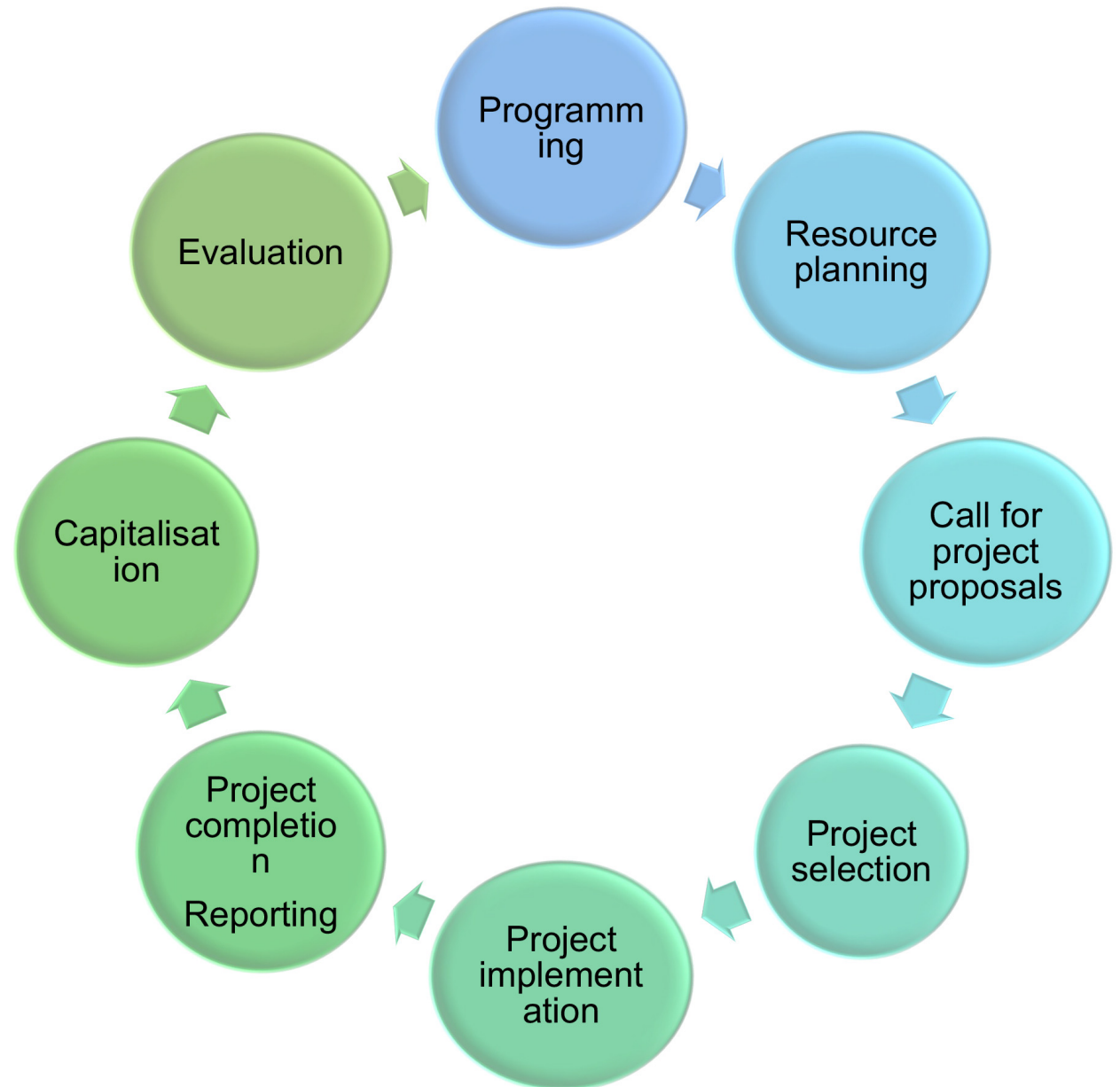
Beneficiaries

- Stakeholder at national, regional, local level
- Beneficiaries through funding

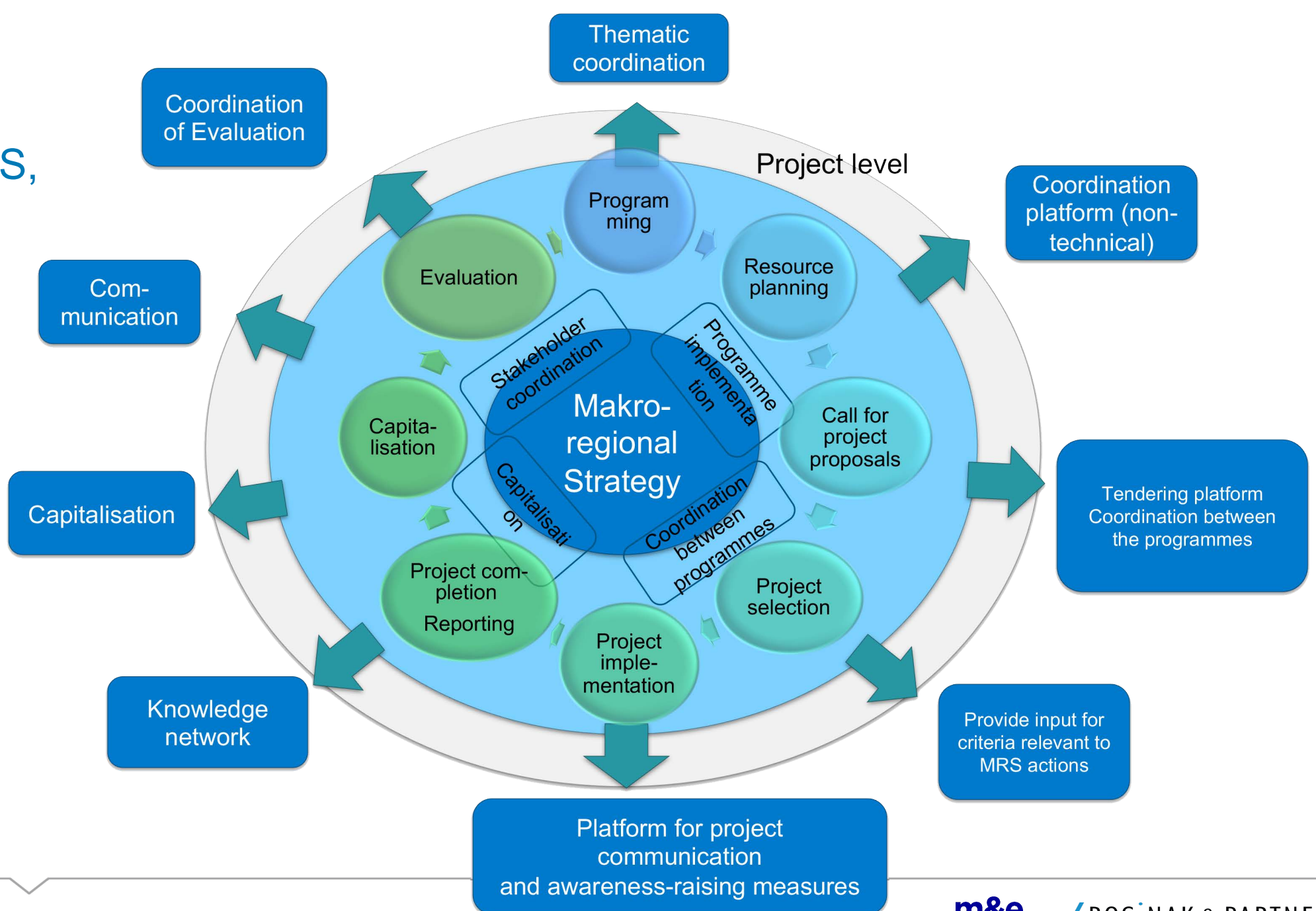
- Multipliers at national, regional, local level
- No or very limited financial support

Programme cycle

Proposals for active embedding are made using the programme cycle - see the stages of the programme cycle in the diagram on the right



Possible interfaces between MRS, programmes and projects



Proposals for active embedding

- 1. Programming:** Coordination between MRS and CBC programming bodies **during the programming-process** and integration of relevant MRS topics and target groups in the programme documents
- 2. Calls:** Timing and thematic coordination of **calls for project proposals and discussion of specific selection criteria** on topics with MRS relevance
- 3. Implementation:** Engaging and activating the MRS and MRS stakeholders to apply for specific projects during **project implementation**

Proposals for active embedding

- 4. Capitalisation: Capitalising project results** and up-take of relevant **project deliverables** (e.g. studies or tools, project data), and integrating them into MRS actions (e.g. in the work of Action Groups, PACs, etc.)
- 5. Evaluation:** Deriving and discussing **evaluation questions** that affect MRS embedding and CBC programmes
- 6. Information & Communication:** Integrating MRS for programme **communication purposes** (e.g. common communication activities etc.)
- 7. Capacity Building: Fostering capacity building and knowledge transfer** with support of INTERACT

Presentations and consultations of the short expertise

April to June 2023:

- » Presentation in the ÖROK-committee EU-Cooperations
- » Reflection workshop with ÖROK working group CBC
- » Reflection workshop with EUSALP actors and further MRS
- » Presentation at ÖROK-committee Regional Economy
- » Short presentation at the EUSDR Embedding-Week
- » Presentation at the ÖROK-Working Group Danube Region

Client and expert team

Duration of the project

March – June 2023

Client

Bundesministerium für Land- und Forstwirtschaft; Regionen und Wasserwirtschaft (Österreich)

Stubenring 1, 1010 Wien

Project team: Michael Roth (project coordinator), Alexandra Deimel, Jutta Moll, Roland Arbter

Expert team

Rosinak & Partner ZT GmbH

Schloßgasse 11, 1050 Wien, <https://www.rosinak.at/>

Elisabeth Stix

Laurin Mayer-Frank

M&E Factory monitoring and evaluation GmbH

Silbergasse 25, 1190 Wien, <https://www.me-factory.eu/>

Christine Hamza

Elona Goma